

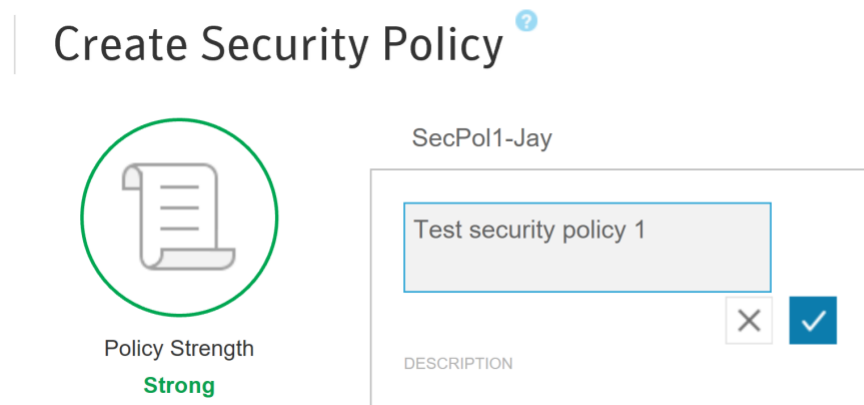
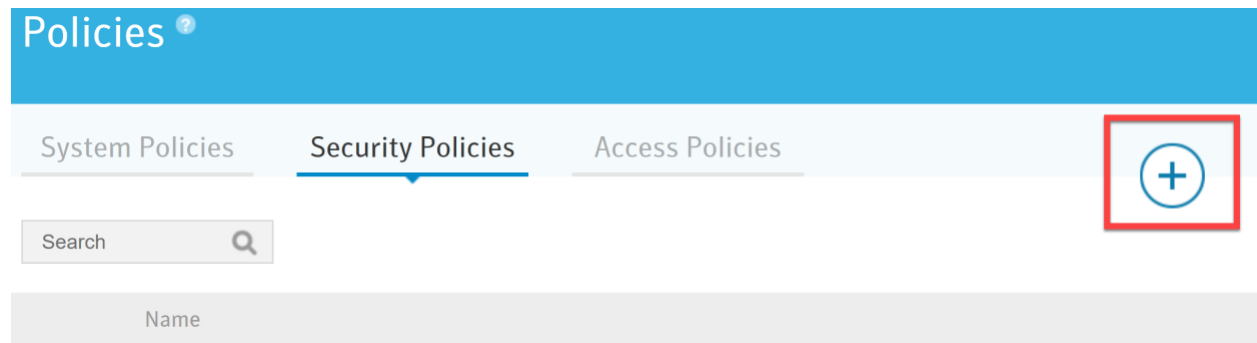
Exploit Protection

Much of the exploit protection functionality in █████ can be applied through the Policy module. Security administrators can build several policies and then apply the appropriate policy to a computer based on role, network, etc.

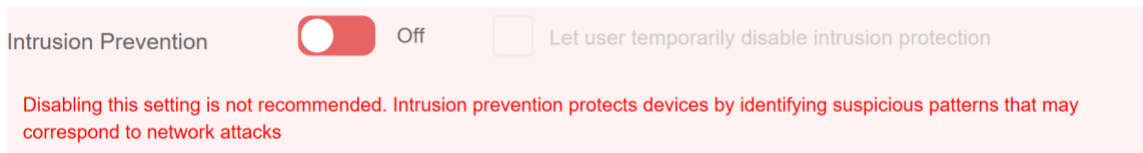
There are three different types of policies in SEPC:

- System
- Security
- Access

The security administrator first creates a new security policy:



To enable exploit protection, the security administrator enables Intrusion Prevention:

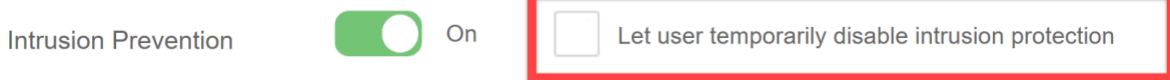


Note The stated policy strength did not change if Intrusion Prevention and Firewall were enabled:

Create Security Policy [?]



After Intrusion Prevention is enabled, security administrators can click to enable the setting that allows users to temporarily disable intrusion prevention:



Also in the Policy module, security administrators can enable settings to prevent the exploitation of browser or application vulnerabilities:

